

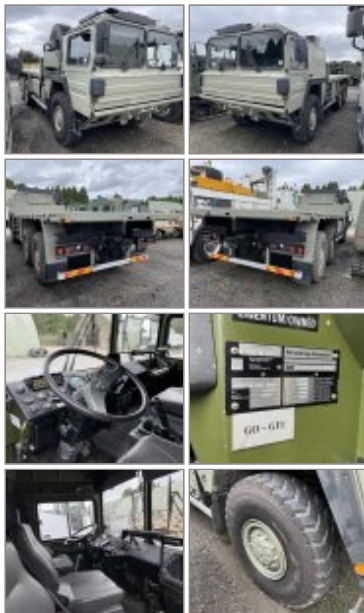
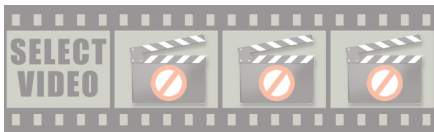
www.govsales.co.uk - The UK's leading suppliers of ex. military vehicles

**Govsales - Ex MoD Surplus, Ex Army Trucks, Vehicles & Equipment**

MAN KAT A1 6x6 LHD Flat Bed Cargo Truck - MoD Ref: 50514



[Share on Facebook](#)



MAN KAT A1 6x6 LHD Flat Bed Cargo Truck - MoD Ref: 50514

**Details**

MAN KAT A1 6x6 LHD Flat Bed Cargo Truck

Very rare now, we have one of these trucks just come into stock and which is in excellent condition with 24,528 kilometres only

This vehicles has a flat bed platform suitable for general cargo or conversion to an overland expedition vehicle.

13 ton payload

Coil spring suspension

**UK Road Registered and Plated**

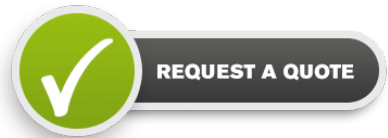
<b>CATEGORY</b>	Cargo Trucks
<b>MANUFACTURER</b>	MAN
<b>ENGINE</b>	Deutz BF81 513 V8 Air Cooled
<b>GEARBOX</b>	ZF 16 Speed with torque converter
<b>BRAKES</b>	Air
<b>STEERING</b>	LHD - PAS
<b>TYRES</b>	14.00 R20



<b>ELECTRICS</b>	24 volt
<b>L x W x H</b>	9.00m x 2.50m x 2.65m
<b>GROSS WEIGHT</b>	24,000kg
<b>HOURS / MILEAGE</b>	24,528kms
<b>YEAR OF MANUFACTURE</b>	1989
<b>QTY AVAILABLE</b>	1

**EXPORT REQUIREMENTS** SIEL Licence Required  
[...more](#)

**PRICE**



All prices quoted are GBP U.K. Pounds Sterling Ex. Works excluding VAT where applicable and shipping / associated costs. Vehicles advertised are subject to remaining unsold. All prices quoted are based on "per individual unit" purchased, any reductions on advertised price for multiple item orders is subject to negotiation and is conducted at the time of inspection or provision of LOI. For complete Terms & Conditions See Main Website. Photo's shown above may represent a vehicle type rather than an actual vehicle, vehicles are available serviced and painted to customers preference. An export licence may be required for items sold to customers outside of the U.K.



**MAN KAT A1 6x6 LHD Flat Bed Cargo Truck**  
Govsales of Ex Military vehicles for sale, Ex Military Land Rovers for sale, Ex army trucks for sale, MoD Surplus, Ex Mo and NATO Disposals, Ex Military and Nato Plant and Equipme

